

# THE GLUMA® FAMILY

FOR BONDING + DESENSITIZING

	ETCHING	PRIMING + BONDING	DESENSITIZING	DISINFECTING	
+					 <p><b>+ GLUMA ETCH</b></p> <p>GLUMA ETCH 20 FOR PHOSPHORIC ACID ETCHING. AVAILABLE IN FLUID OR GEL</p> <p>GLUMA ETCH 35 FOR PHOSPHORIC ACID ETCHING. AVAILABLE IN FLUID OR GEL</p>
		+			 <p><b>+ GLUMA SOLID BOND</b></p> <p>4TH GENERATION ADHESIVE SEPARATE PRIMING AND BONDING STEPS, 25% FILLED RADIOPAQUE, FLUORIDE RELEASE</p>
	+	+	+		 <p><b>+ GLUMA COMFORT BOND + DESENSITIZER</b></p> <p>5TH GENERATION ADHESIVE ONE-STOP PRIMING AND BONDING. NO MIXING. CONTAINS GLUMA DESENSITIZER.</p>
+	+	+	+		 <p><b>+ IBOND</b></p> <p>7TH GENERATION ADHESIVE ONE-STOP, ONE-COMPONENT SELF-ETCHING ADHESIVE WITH DESENSITIZER. NO MIXING.</p>
			+	+	 <p><b>+ GLUMA DESENSITIZER</b></p> <p>DESENSITIZES AND DISINFECTS. ALSO IMPROVE BOND STRENGTH WHEN WITH MOST ADHESIVES</p>

Heraeus Kulzer, Inc.  
99 Business Park Drive  
Armonk, NY 10504 USA  
(800) 431-1785  
(800) 273-8600

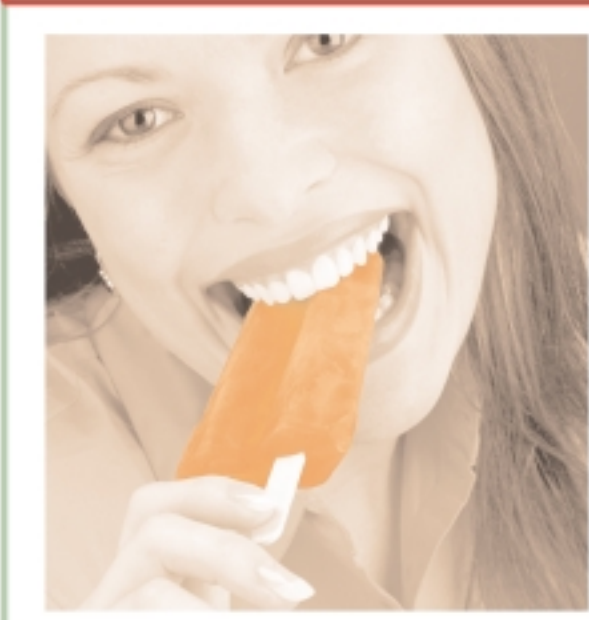
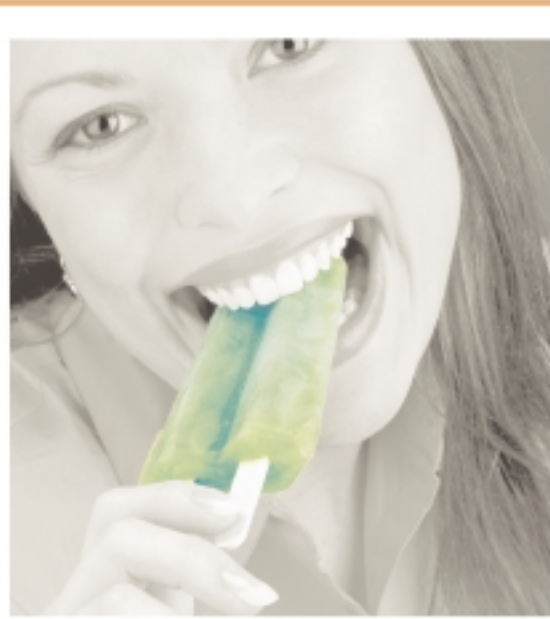
In Canada  
5266 General Road, Unit 10  
Mississauga, Ontario L4W 1Z7  
(800) 268-2030  
(905) 625-3806

**Heraeus  
Kulzer**

Partnership First.

[www.Heraeus-Kulzer-US.com](http://www.Heraeus-Kulzer-US.com)

# GLUMA®



THE FIRST CHOICE FOR EFFECTIVE  
BONDING AND DESENSITIZING

+

# GLUMA®

## COMFORT BOND + DESENSITIZER

5<sup>TH</sup> GENERATION ADHESIVE FOR TOTAL-ETCH, TOTAL-BOND



Prime, Bond, Desensitize and Disinfect in a single no-mix step !

Get the proven results of Gluma Desensitizer as you bond.

Gluma Comfort Bond + Desensitizer's patented chemistry lets you stop and prevent sensitivity while bonding.

No multiple bottles, so there is less room for technique sensitivity.

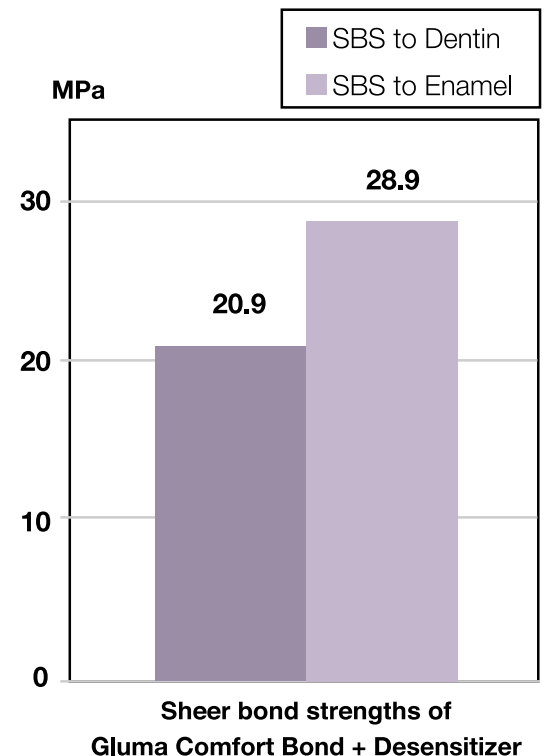
### + THE 4 IN 1 SOLUTION +

- Gluma CB + D is a one bottle adhesive for priming, bonding, desensitizing and disinfecting
- It is simple to use and requires no mixing.
- Suitable for both moist and dry bonding techniques.
- Indicated for bonding direct filling light curing composite or compomer restorations.
- Bonding agent for indirect restorations – such as ceramic veneers, ceramic crown, inlays and onlays – when used with light-cure or dual cure luting cements.
- The only 5<sup>th</sup> generation adhesive to include Reality's Choice Five-Star award-winning Gluma Desensitizer

#### EXCEPTIONAL DESENSITIZATION

Gluma CB+D also contains the number one desensitizer by Reality's Choice.

With its proven ability to disinfect and desensitize, you can be assured of virtually no post-operative hypersensitivity.



Source: W. Finger, Univ. of Cologne

# GLUMA® DESENSITIZER

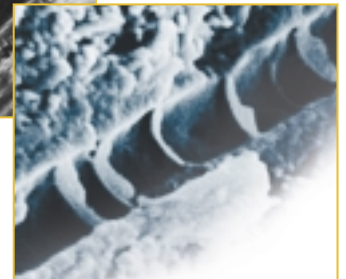
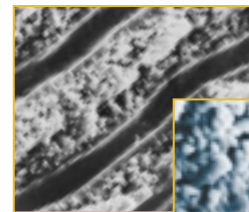
THE MOST EFFECTIVE PROVEN DESENSITIZER

Gluma has been in the market for more than 13 years and has been used in over 45 million restorations worldwide to stop and prevent hypersensitivity. One drop of Gluma is all you need and the result is fast and effective. No mixing, no curing and no repetitive steps.

## + INDICATIONS OF GLUMA +

- For treating cervical hypersensitivity.
- For use as pretreatment to priming and bonding in direct composite restorations.
- For use as pretreatment prior to placing compomer or amalgam restorations.
- For use after crown and bridge preparation.
- For use prior to crown and bridge cementation or bonding.

Dentinal tubule before application of Gluma



Formation of Protein Septas follows application of Gluma

## + HOW DOES GLUMA WORK? +

Gluma works by penetrating the exposed dentinal tubules for up to 200  $\mu$ . The result is the formation of multiple layers of protein septas, hence preventing intra-tubular fluid movements due to osmotic changes. In addition Gluma is also a proven disinfectant.

### GLUMA IMPROVES BOND STRENGTHS.

Collapsed collagenous fibril network is a common occurrence in total-etch, total-bond techniques if the cavity preparation is over dried. The result is reduced shear bond strengths. Gluma is also an excellent rewetting agent and it works by infiltrating and resurrecting the collapsed collagen, hence improving the adhesion of bonding agents to the tooth<sup>1</sup>. Numerous studies have shown the use of Gluma prior to adhesive placement can improve the shear bond strength of the adhesive<sup>2</sup>.



+ 1. H. Heyman, Dentistry Today, March 2000

+ 2. CRA Newsletter, Oct 2002.